

Because life is

PettyTM
Real

270 Kings Causeway
Brierfield
BB9 0EZ



For Sale

Price £250,000

- Modern semi-detached property
- Sought after location
- Entrance hallway & wc
- Lounge
- Fitted dining kitchen

- Utility room & study/studio
- Three bedrooms
- Modern 4 piece bathroom
- Gardens front & rear
- Driveway & garage



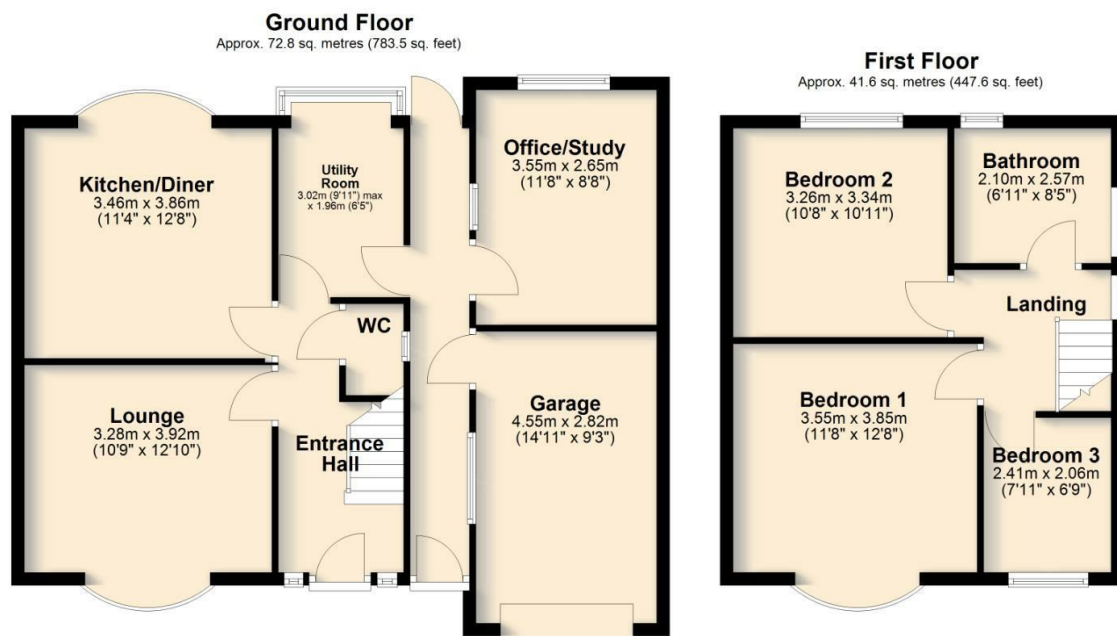
Situated on the desirable Kings Causeway in Brierfield, this well-presented semi-detached property offers spacious and versatile living accommodation ideal for families and professionals alike. The home boasts an attractive exterior with a driveway providing off-road parking and access to a single garage, while gardens to both the front and rear enhance the property's curb appeal and outdoor enjoyment.

The ground floor features a welcoming entrance hallway that leads into a bright and comfortable lounge, perfect for relaxing or entertaining guests. Adjacent to the lounge is a generous dining kitchen, fitted with modern units and ample space for a family dining table, making it the heart of the home. The kitchen provides access to the utility area, offering additional storage and laundry facilities.

One of the standout features of this home is the versatile study or office, which presents an ideal space for remote working, a playroom, or a hobby area. Its separation from the main living areas ensures a quiet environment, catering to the needs of those seeking a dedicated workspace.

Upstairs, the property offers well-proportioned bedrooms and a family bathroom, making it suitable for growing families. The layout provides flexibility and the potential to adapt rooms to suit individual lifestyle requirements.

Externally, the rear garden offers a private and enclosed outdoor space perfect for family activities, gardening, or summer entertaining. Located in a convenient area close to local amenities, transport links, and schools, this Kings Causeway property represents a fantastic opportunity to acquire a well-balanced and practical home.



Total area: approx. 114.4 sq. metres (1231.2 sq. feet)

All floorplans provided by Petty Real are for guidance only. Please check all dimensions before making any decisions reliant upon them.
Plan produced using PlanUp.



These particulars, whilst believed to be accurate are set out as a general outline only for guidance and do not constitute any part of an offer or contract. Intending purchasers should not rely on them as statements of representation of fact, but must satisfy themselves by inspection or otherwise as to their accuracy. No person in this firm's employment has the authority to make or give any representation or warranty in respect of the property.